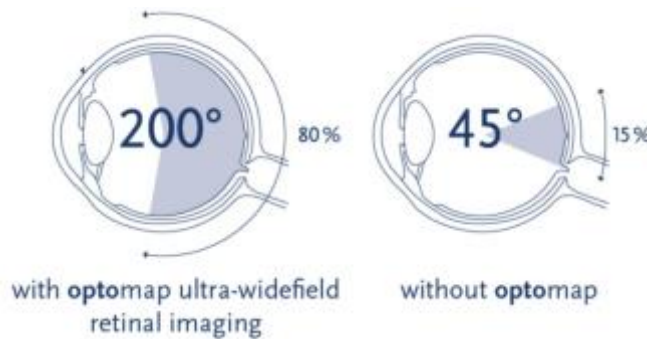




Optomap Retinal Images

We pride ourselves on providing our patients with the best possible standard of care.

Because of this, the doctor strongly recommends that ALL of our patients receive an optomap during their annual exam.



Optomap: Identifies and documents retinal problems such as macular degeneration, glaucoma, retinal holes, retinal detachments and diabetes related issues.

For most patients this test can alleviate the need for dilation.

_____ **YES, I agree to the optomap® today with a \$39 co-pay (Doctor Recommended)**

_____ Unsure, I would like more information from the technician & doctor

Early detection is crucial!

I have read and understand this document:

Sign: _____

Date: _____